

# Exceptional versatility and unmatched quality

with Inside Outside Printing



FLEXTONE FFG


EXPERTLINE FFG

At a glance

# Powering performance

The exceptional versatility, the high productivity and unmatched quality with inside outside printing in one pass, designed for easy operations and optimised resources usage. The most versatile, the most automated, the most ergonomic solution of the market. More than 600 large size FFG machines installed worldwide over 50 years.

## EXPERTLINE FFG

- > At a glance
- > Packaging market
- > Agility and quality
- > Benefits and features
  - > Exceptional versatility
  - > Unmatched quality
  - > Easy operations
  - > Optimised resources usage
- > OneRegister 
- > Specifications
- > Related products
- > Services

**Exceptional versatility**  
and high productivity

**Unmatched quality**  
with inside printing

**Safe & Easy**  
operations

**Optimized**  
resources usage

REQUEST CONSULTING

WATCH VIDEO

 Print responsibly

Data is not binding.  
Non-contractual pictures.  
The manufacturer reserves  
the right to make  
modifications without notice.  
© BOBST S.A. 2023  
BUSF-EXPERTLINEFFG-  
EN-012023

# Creating value

**BOBST innovations**  
are driven by customer  
and brand owner needs.

> READ MORE

## Goods protection and safety

Protecting the goods is the main requirement for corrugated boxes meaning high quality, clever designs, robustness and zero-fault.

## Customized, premium, secured

Boxes play a new role where customization, high-graphics and security features are required.

## Out of the box experience

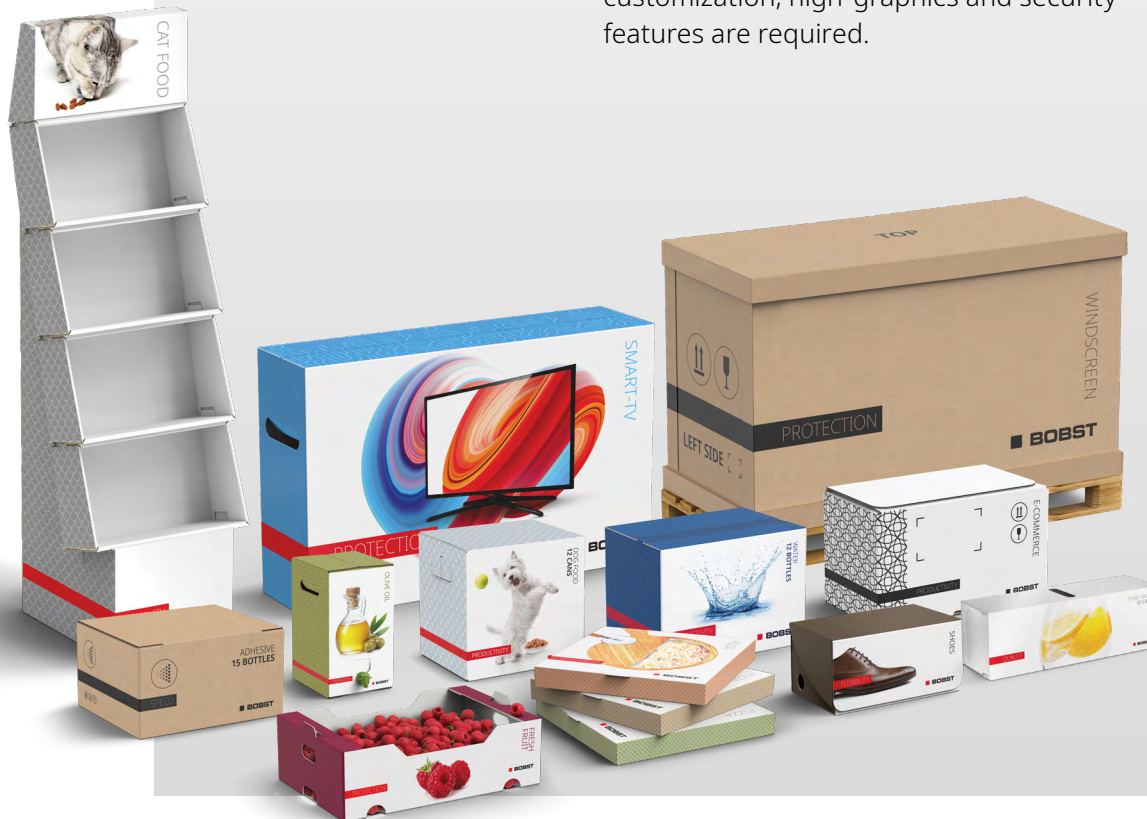
Consumers expect the most relevant un-boxing of any goods. Packages are becoming more clever, telling a story as part of the brand positioning.

## E-commerce

The demand is growing and is here to stay. Boxes need to come in almost any size and shape, requiring flexibility and productivity across the supply chain.

## Sustainability

Packaging production needs to reduce its environmental carbon footprint, less waste across the entire supply chain. New and thinner substrates. Recycling and re-use are the new rules.



## EXPERTLINE FFG

- > At a glance
- > Packaging market
- > Agility and quality
- > Benefits and features
  - > Exceptional versatility
  - > Unmatched quality
  - > Easy operations
  - > Optimised resources usage
- > OneRegister
- > Specifications
- > Related products
- > Services

 Print responsibly

Data is not binding.  
Non-contractual pictures.  
The manufacturer reserves  
the right to make  
modifications without notice.  
© BOBST S.A. 2023  
BUSF-EXPERTLINEFFG-  
EN-012023

# Agility and quality

## Wide range of packaging

**BOBST innovations**  
are driven by customer  
and brand owner needs.

[> READ MORE](#)

**Shipping box, consumer packaging, shelf ready packaging, TV box, multi panel box, trays**

- From one side to inside outside printing
- Up to nine colors
- From simple block printing to high graphics
- From E-flute to double wall
- From simple to complex die cut
- From the smallest box to the biggest



### EXPERTLINE FFG

- > At a glance
- > Packaging market
- > Agility and quality
- > Benefits and features
  - > Exceptional versatility
  - > Unmatched quality
  - > Easy operations
  - > Optimised resources usage
- > OneRegister
- > Specifications
- > Related products
- > Services

Print responsibly

Data is not binding.  
Non-contractual pictures.  
The manufacturer reserves  
the right to make  
modifications without notice.  
© BOBST S.A. 2023  
BUSF-EXPERTLINEFFG-  
EN-012023

# Exceptional versatility and high productivity

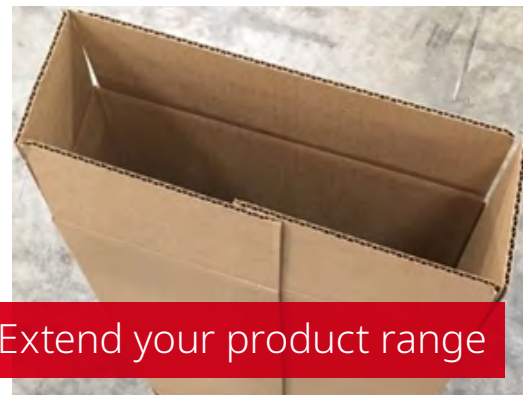


## Die-Cutter

- Full and complex die-cut production
- Flat delivery production in 2 or 3 outs with nick points

## Stripper

- Efficient die-cut waste ejection
- Fully motorized settings



## Slotter

- Extend-o-Box for higher box height than standard maximum box height
- Additional slotter and motorization of central head for multi panel boxes



## Slotter

- Small panel for large size box
- ## Stitching / Taping

## EXPERTLINE FFG

- > At a glance
- > Packaging market
- > Agility and quality
- > Benefits and features
  - > Exceptional versatility
  - > Unmatched quality
  - > Easy operations
  - > Optimised resources usage
- > OneRegister
- > Specifications
- > Related products
- > Services

 Print responsibly

Data is not binding.  
Non-contractual pictures.  
The manufacturer reserves the right to make modifications without notice.  
© BOBST S.A. 2023  
BUSF-EXPERTLINEFFG-EN-012023

# Exceptional versatility and high productivity



High uptime

## Full converting solution from prefeeder to palletizer

- Converting line printing, cutting and folding in one pass
- Fully automated settings
- Connected machine



High productive features

## Production speed up to 33 000 b/h

- Multifold: output speed increased by 2 or 3
- Extend-o-box to avoid blade change in full die-cut production



No limit of production

## In one pass

- Switch from inside outside printing job to outside printing job without impacting productivity
- From long to small order sizes

## EXPERTLINE FFG

- > At a glance
- > Packaging market
- > Agility and quality
- > Benefits and features
  - > Exceptional versatility
  - > Unmatched quality
  - > Easy operations
  - > Optimised resources usage
- > OneRegister
- > Specifications
- > Related products
- > Services

 Print responsibly

Data is not binding.  
Non-contractual pictures.  
The manufacturer reserves the right to make modifications without notice.  
© BOBST S.A. 2023  
BUSF-EXPERTLINEFFG-EN-012023

# Unmatched quality with inside outside printing



Consistent quality

### Added value packaging

- Up to 15% improvement of BCT with BOBST no crush feeder technology
- Accurate and consistent folding with Multi-T belts and motorized gauge rollers
- Advanced Scorers INNOFOLD to avoid inner liner tearing



High printing quality

### High accuracy

- Efficient dust collection system for perfect printing quality on both sides
- Motorized skewing
- High printing register accuracy



Premium experience

### E-commerce solution in one pass

- EXPERTLINE FFG is inline with the fast acceleration of e-commerce offering 'Unboxing experience'
- Inside print with top flexo unit, patented solution
- No printing limit: up to 9 flexos units on the converting line

### EXPERTLINE FFG

- > At a glance
- > Packaging market
- > Agility and quality
- > Benefits and features
  - > Exceptional versatility
  - > Unmatched quality
  - > Easy operations
  - > Optimised resources usage
- > OneRegister
- > Specifications
- > Related products
- > Services



Data is not binding.  
Non-contractual pictures.  
The manufacturer reserves the right to make modifications without notice.  
© BOBST S.A. 2023  
BUSF-EXPERTLINEFFG-  
EN-012023

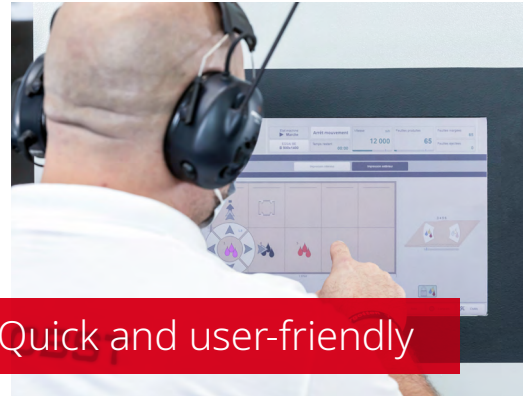
# Safe and Easy operations



Intuitive set-ups

## Easy to set

- Time-saving ergonomic: maximum uptime, minimum effort
- Production line with 100% automatized & saved settings, one button to set all the line
- Posilock®, quick positioning and locking system



Quick and user-friendly

## Easy to operate

- The highest safety level solution on the market
- Intuitive and user-friendly interface with easy menu
- Easy sampling for quality control
- Carbon fiber doctor blade chamber for an easy and safe handling



Standardized spare parts

## Easy to maintain

- Heavy duty design with standardized spare parts
- Maintenance free vacuum transfer
- All parts of the machine easily accessible

## EXPERTLINE FFG

- > At a glance
- > Packaging market
- > Agility and quality
- > Benefits and features
  - > Exceptional versatility
  - > Unmatched quality
  - > Easy operations
  - > Optimised resources usage
- > OneRegister
- > Specifications
- > Related products
- > Services

 Print responsibly

Data is not binding.  
Non-contractual pictures.  
The manufacturer reserves the right to make modifications without notice.  
© BOBST S.A. 2023  
BUSF-EXPERTLINEFFG-EN-012023

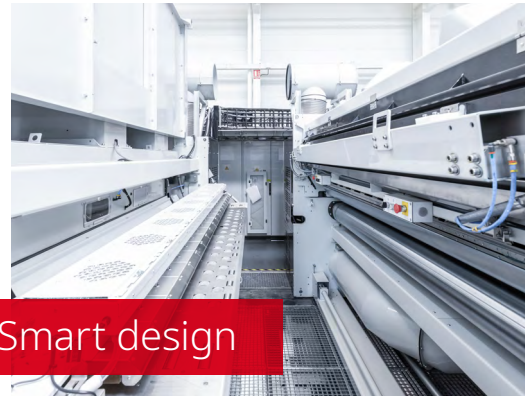
# Optimized resources usage



Waste reduction

## Optimized use of natural resources

- Start&Go: Drastic reduction of cardboard waste during set-ups & during production
- Vacuum power automatically adapted to the sheet size



Smart design

## Sustainable operations

- Reduction of claims thanks to ejection of non conform boxes with automatic bundle ejection
- Machine resilience to cardboard quality variations
- New design of ink circuits to minimize ink waste during wash-up



Made to last

## BOBST Design expertise

- Designed in France, heavy duty engineering, high-quality manufacturing
- Robust, reliable solution made with more than 55 years of experience in Flexo Folder Gluer
- Evolutive conception for future market needs

## EXPERTLINE FFG

- > At a glance
- > Packaging market
- > Agility and quality
- > Benefits and features
  - > Exceptional versatility
  - > Unmatched quality
  - > Easy operations
  - > Optimised resources usage
- > OneRegister
- > Specifications
- > Related products
- > Services

 Print responsibly

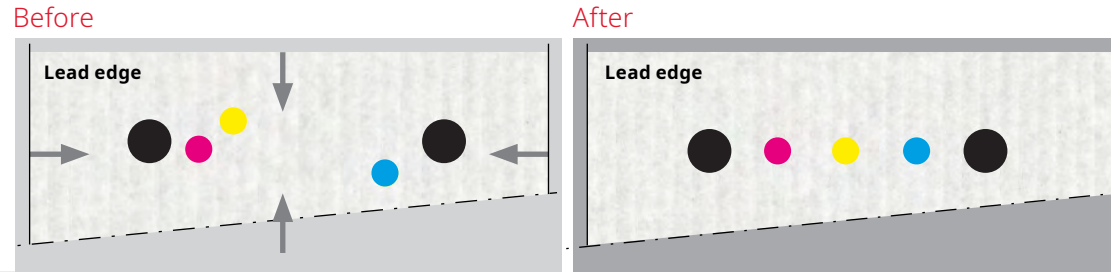
Data is not binding.  
Non-contractual pictures.  
The manufacturer reserves the right to make modifications without notice.  
© BOBST S.A. 2023  
BUSF-EXPERTLINEFFG-  
EN-012023

# OneRegister

Two quality control systems for perfect printing register consistency during set-up or during production.

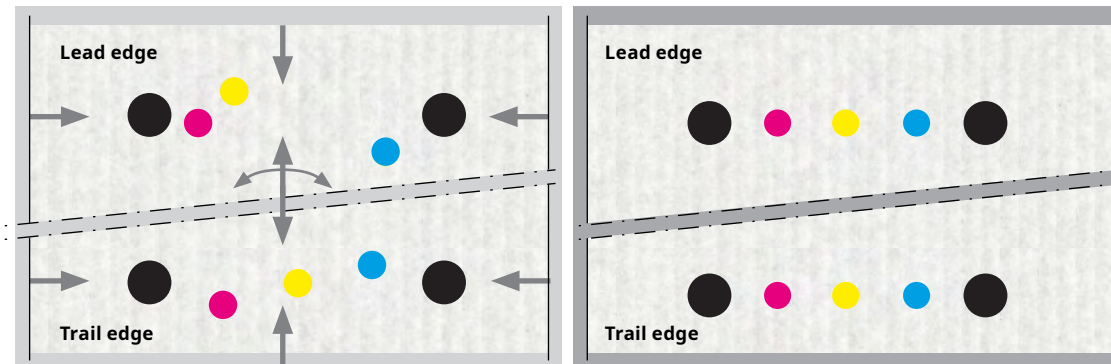
## Set & Check

Quick print register set-up: registration and centering



## Start & Go

Fully automatic set-up of print register: registration, centering, elongation and skewing



### EXPERTLINE FFG

- > At a glance
- > Packaging market
- > Agility and quality
- > Benefits and features
  - > Exceptional versatility
  - > Unmatched quality
  - > Easy operations
  - > Optimised resources usage
- > OneRegister
- > Specifications
- > Related products
- > Services

Ejection of non-conforming sheets

Print responsibly

Data is not binding.  
 Non-contractual pictures.  
 The manufacturer reserves the right to make modifications without notice.  
 © BOBST S.A. 2023  
 BUSF-EXPERTLINEFFG-EN-012023



## EXPERTFFG

2 Top flexo units + 4 Bottom flexo units  
 + 1 Final transfer unit + Slotter S3P + Die-cutter  
 + Stripping unit + Folder + Top Counter Ejector

**1**

EXPERTFFG	3.5 m	11.5 ft*
-----------	-------	----------

**2**

EXPERTFFG	30 m	98,4 ft*
-----------	------	----------

**3**

EXPERTFFG 1228	8.6 m	28.2 ft
EXPERTFFG 1232/1832	9.0 m	29.5 ft
EXPERTFFG 1636	9.4 m	30.8 ft

\* Values may vary according to the configuration.

## EXPERTLINE FFG

- > At a glance
- > Packaging market
- > Agility and quality
- > Benefits and features
  - > Exceptional versatility
  - > Unmatched quality
  - > Easy operations
  - > Optimised resources usage
- > OneRegister
- > Specifications
- > Related products
- > Services

Print responsibly

Data is not binding.  
 Non-contractual pictures.  
 The manufacturer reserves the right to make modifications without notice.  
 © BOBST S.A. 2023  
 BUSF-EXPERTLINEFFG-EN-012023

## Specifications – Technical information

### Materials processed

Corrugated board.  
Single wall and double wall, thickness from 1.4 to 10 mm (0.055 to 0.393 inches).

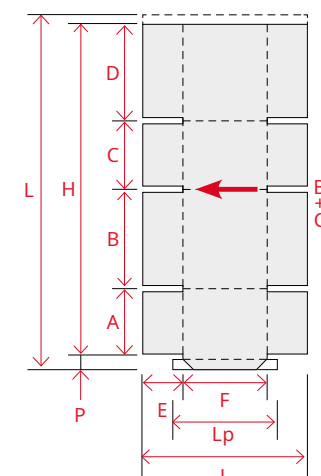
Sheets sizes*		1228		1232		1632		1636			
		Min./mm	Min./inch	Max./mm	Max./inch	Max./mm	Max./inch	Max./mm	Max./inch		
L	Sheet length	700	27.6	2.890	113.7	3.290	129.5	3.290	129.5	3.690	145.2
H	Total length of panels	700	27.6	2.800	110.2	3.200	125.9	3.200	125.9	3.600	141.7
	Sheet width	1228-32		350	13.8	1.160	45.6	1.160	45.6	1.540	60.6
		1632-36		450	17.8						
	With Skeep-Feed (without extended feed table)	-	-	1500**	59	1.500**	59	1.600	62.9	1.600	62.9
	With Skeep-Feed (with extended feed table)	-	-	-	-	-	-	2.100	82.6	2.100	82.6
A=C	Small panel	1228-32		100	4.0	1.125	48.2	1.425	56.1	-	-
		1632-36		120****	4.8	-	-	-	-	1.425	1.625
B=D	Large panel	175****	6.9	1.280	50.3	1.480	58.2	1.480	58.2	1.680	66.1
B+C	Half-box	350	13.8	1.400	55.1	1.600	62.9	1.600	62.9	1.800	70.8
E	Slotting length	0	0	700	27.5	700	27.5	800	31.4	800	31.4
F	Box height	100	4.0	950	37.4	950	37.4	1.325	52.1	1.325	52.1
P	Glue lap width	0	0	45	1.7	45	1.7	60	2.3	60	2.3
	Unfolded sheet	600	23.7	1.800****	70.8	1.800****	70.8	1.800	70.8	1.800	70.8

Machine speed	1228	1232	1632	1636
Production speed (sheet/hour)	15,000	13,000	10,000	9,000

### Machine specifications

Nominal circumference of print cylinder	1228-32	1.300 mm	51.2 in
	1632-36	1.675 mm	66 in
Maximum printing surface	1228	1.140 x 2.800 mm	44.9 x 110.2 in
	1232	1.140 x 3.200 mm	44.9 x 126 in
	1632	1.515 x 3.200 mm	59.6 x 126 in
	1636	1.515 x 3.600 mm	59.6 x 141.7 in
Board infeed height		1.200	47.25 in
Power supply capacity - 4 colors		263 kVA*	
Air consumption - 4 colors		206 Nm <sup>3</sup> /h*	

\*Dimensions may vary slightly according to configuration and are understood with glue lap inside the box  
 \*\* 1.200 mm (47.2") with TCE NT MEDIUM  
 \*\*\* Mini 100 mm (4.0") possible with slots to be done on die cutter  
 \*\*\*\* 1.600 mm (62.9") with TCE NT MEDIUM



### EXPERTLINE FFG

- > At a glance
- > Packaging market
- > Agility and quality
- > Benefits and features
  - > Exceptional versatility
  - > Unmatched quality
  - > Easy operations
  - > Optimised resources usage
- > OneRegister
- > Specifications
- > Related products
- > Services

REQUEST CONSULTING

WATCH VIDEO

Print responsibly

Data is not binding.  
Non-contractual pictures.  
The manufacturer reserves the right to make modifications without notice.  
© BOBST S.A. 2023  
BUSF-EXPERTLINEFFG-EN-012023

## Related products



### **MULTILOADER**

#### **Reliable and easy to use**

This fully automatic prefeeder ensures optimum production line capacity. Sheets are fed accurately and evenly. It feeds EXPERTFFG and runs with all types of flutes.



### **PREMIUM GAP CONTROL**

BOBST's Premium Gap Control ensures reliable and precise control of 100% of finished boxes at rated production speed. Easy to operate, optimum productivity and total folding quality: the competitive circle squared.



### **FFG PALLETIZER - Flexible and Fast**

FFG palletizer ensures that your whole production process maintains quality and speed. The fully automated palletizer handles any FFG boxes and provides high speeds, quality and flexibility.

#### **EXPERTLINE FFG**

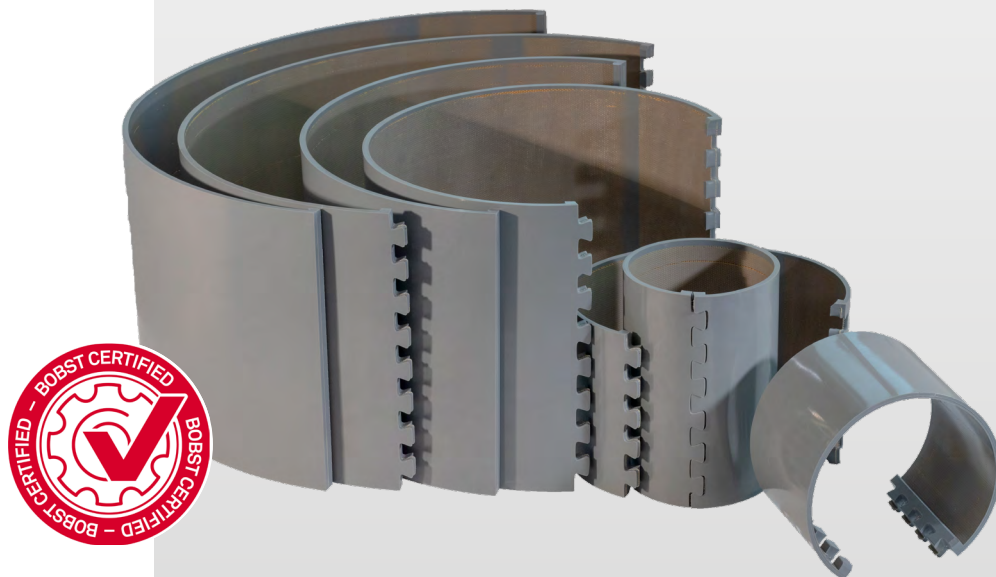
- > At a glance
- > Packaging market
- > Agility and quality
- > Benefits and features
  - > Exceptional versatility
  - > Unmatched quality
  - > Easy operations
  - > Optimised resources usage
- > OneRegister
- > Specifications
- > Related products
- > Services

 Print responsibly

Data is not binding.  
Non-contractual pictures.  
The manufacturer reserves the right to make modifications without notice.  
© BOBST S.A. 2023  
BUSF-EXPERTLINEFFG-EN-012023

# Maintaining excellence

Expert services for all your equipment.  
Improve your processes, boost your productivity and enhance your expertise with a complete range of services from BOBST.



## Maintenance Plus

- Scheduled maintenance with BOBST certified technicians
- Preventative intervention, maximizing machine uptime
- Optimum performance over the equipment lifetime

[> WATCH VIDEO](#)

## Approved parts and logistics

- BOBST Original and Certified parts, and consumables
- Quality assurance, and extended maintenance intervals
- Worldwide distribution, and full availability where and when you need it

[> LEARN MORE](#)

## Machine upgrades

- Additional features, configured for your machine
- Enhanced functionality, connectivity and capability
- Future-proofing your investment, maintaining competitive advantage

[> LEARN MORE](#)

## EXPERTLINE FFG

- > At a glance
- > Packaging market
- > Agility and quality
- > Benefits and features
  - > Exceptional versatility
  - > Unmatched quality
  - > Easy operations
  - > Optimised resources usage
- > OneRegister
- > Specifications
- > Related products
- > Services

 Print responsibly

Data is not binding.  
Non-contractual pictures.  
The manufacturer reserves the right to make modifications without notice.  
© BOBST S.A. 2023  
BUSF-EXPERTLINEFFG-EN-012023

# Digital-age manufacturing happening with BOBST Connect

**BOBST Connect** is an end-to-end, one-stop digital platform that enhances and improves your packaging productivity. It's designed to help you make the most of the data your machine generates, improving value and efficiency across your value chain.

As well as exceptional data insights, **BOBST Connect** helps to orchestrate and enhance your whole production process, from your PDF to the finished product and quality report. It brings data and digital services together in one fully connected platform, with machine insights and expertise built in.

**BOBST Connect** gives you access to the BOBST ecosystem of digital services, whether you're a printer or a converter. It offers you a host of features and functionality to help you optimize your packaging production.

**BOBST Connect Essential** is the first subscription level that incorporates the critical components of the transformation in packaging production, automation, and the fully connected workflow.



## Benefits



### Access to data

- An easy, smooth introduction to the data-driven world
- See relevant data remotely from anywhere
- Access data in real time, with history readily available
- Production performance documented by machine solution



### Improved performance

- Provides relevant data to optimize and improve your production performance
- Production data allows you to improve machine handling and shift output



### Remote support

- Priority access to technical specialists
- Video with Augmented Reality support using Teamviewer allows fast, remote resolution of electrical and mechanical problems, and reduced downtime
- 24/7 support available

## Features

**The BOBST Connect Essential solutions package includes a wide range of features such as:**

- **Performance analysis** – identify and eliminate performance gaps
- **Accurate OEE** – meaningful insights on downtime, target speed and quality losses
- **Direct connection** – remote connection direct to your machine
- **Progress indicator** – shows job completion time, and empowers interventions
- **Reporting** – trend analysis over time
- **Shift management** – optimize resource planning and efficiency
- **User-centric** – an interface that is intuitive, clear and easy to use

## Specifications

- Cloud-based platform, developed by BOBST, based on Microsoft Azure
- Integrates with your MES (Manufacturing Execution System), MIS (Management Information System) and ERP (Enterprise Resource Planning), as well as third party cloud-based applications
- Hosted in a fully secure, ISO 27001 certified environment

## EXPERTLINE FFG

- > At a glance
- > Packaging market
- > Agility and quality
- > Benefits and features
  - > Exceptional versatility
  - > Unmatched quality
  - > Easy operations
  - > Optimised resources usage
- > OneRegister
- > Specifications
- > Related products
- > Services

 Print responsibly

Data is not binding. Non-contractual pictures. The manufacturer reserves the right to make modifications without notice. © BOBST S.A. 2023 BUSF-EXPERTLINEFFG-EN-012023

# Exceptional versatility and unmatched quality

with Inside Outside Printing

> [WWW.BOBST.COM](http://WWW.BOBST.COM)



## EXPERTLINE FFG

- > At a glance
- > Packaging market
- > Agility and quality
- > Benefits and features
  - > Exceptional versatility
  - > Unmatched quality
  - > Easy operations
  - > Optimised resources usage
- > OneRegister
- > Specifications
- > Related products
- > Services

REQUEST CONSULTING

WATCH VIDEO

 Print responsibly

Data is not binding.  
Non-contractual pictures.  
The manufacturer reserves  
the right to make  
modifications without notice.  
© BOBST S.A. 2023  
BUSF-EXPERTLINEFFG-  
EN-012023